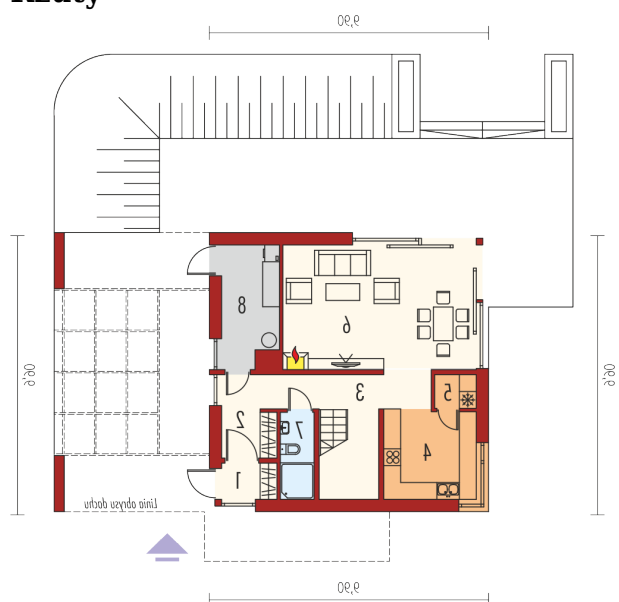
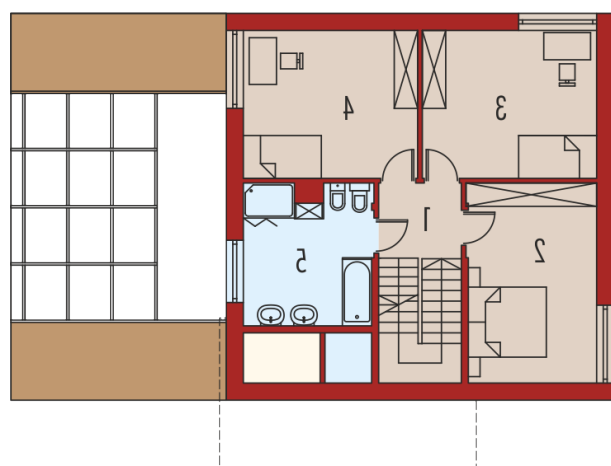
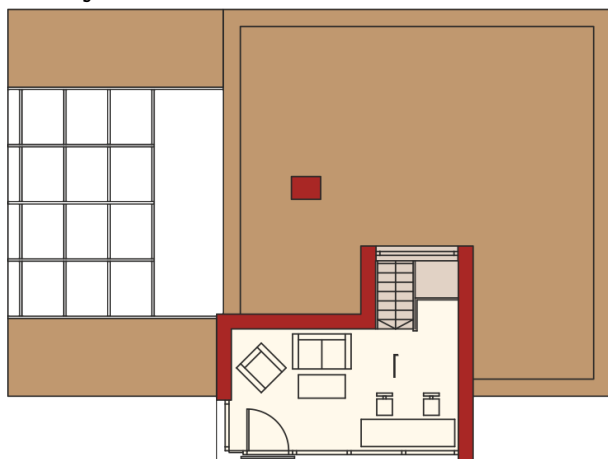


Rzuty

Parter 75.07 m²

Wiatrołap	2.65 m ²
Garderoba	3.21 m ²
Hol + schody	15.26 m ²
Kuchnia	10.11 m ²
Spizarnia	1.80 m ²
Pokój dzienny	30.09 m ²
Łazienka	3.52 m ²
Pom. techniczne	8.43 m ²


Piętro 65.93 m²

Korytarz	4.29 m ²
Sypialnia	16.87 m ²
Sypialnia	16.63 m ²
Sypialnia	16.63 m ²
Łazienka	11.51 m ²

Rzuty**Antresola 17.48 m²****Gabinet**17.48 m²